

SCOLIOSIS PROTOCOL

SCENAR Life – Information Document

Dr. John A. Hache DNM



SCENAR LIFE – Information Document

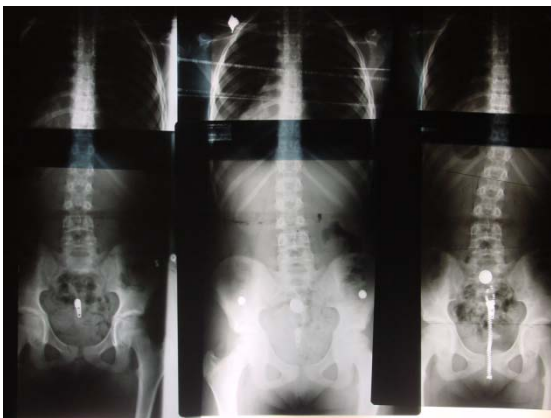
SCOLIOSIS PROTOCOL

By Dr. John A. Haché DNM

Scoliosis is defined as a lateral curvature of the spine. In most cases, the scoliosis is idiopathic (80% of cases); meaning that it is not known what has caused the curvature to occur.

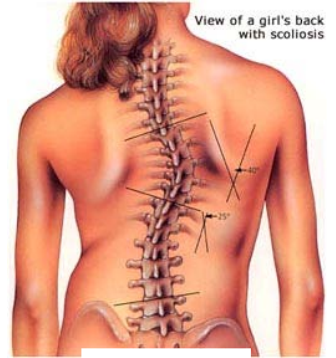
Adolescents are the most common age group to have idiopathic scoliosis, and it usually begins between the ages of 10 and 14. While it occurs about equally in both boys and girls, girls are much more likely to have a progression of the curve that requires treatment.

In the following case, the girl's X-ray (Danielle, Scoliosis B) shows a 15 degree Scoliosis with a torque. The image progresses from the right to the left. She was treated with the RITM professional device on three occasions. The treatment protocol involved only three treatments of approx 10 to 15 minutes each – once a week.



Danielle.Scoliosis B

Effects are quick (3 days in this case) and sustainable.



Scoliosis A

Scenar therapy in most cases allows the body to correct this unnatural curvature of the spine; results after just one treatment are usually visible. After several treatments muscular tone begins to normalize as muscles are re-trained to maintain their natural position. A straight spine allows effective nerve communication which is a requirement for self regulation of the body.

